

## **Manual Hardware Conversion Blade® 350 QX Version 2**

Besides upgrading your software to Version 2.0, the GPS board and antenna will need to be relocated to improve GPS reception.

Use the following instructions to relocate your hardware.

1. Prepare your working surface by laying down a towel or soft cloth.
2. Remove the Prop-screws with a 2mm Hex wrench



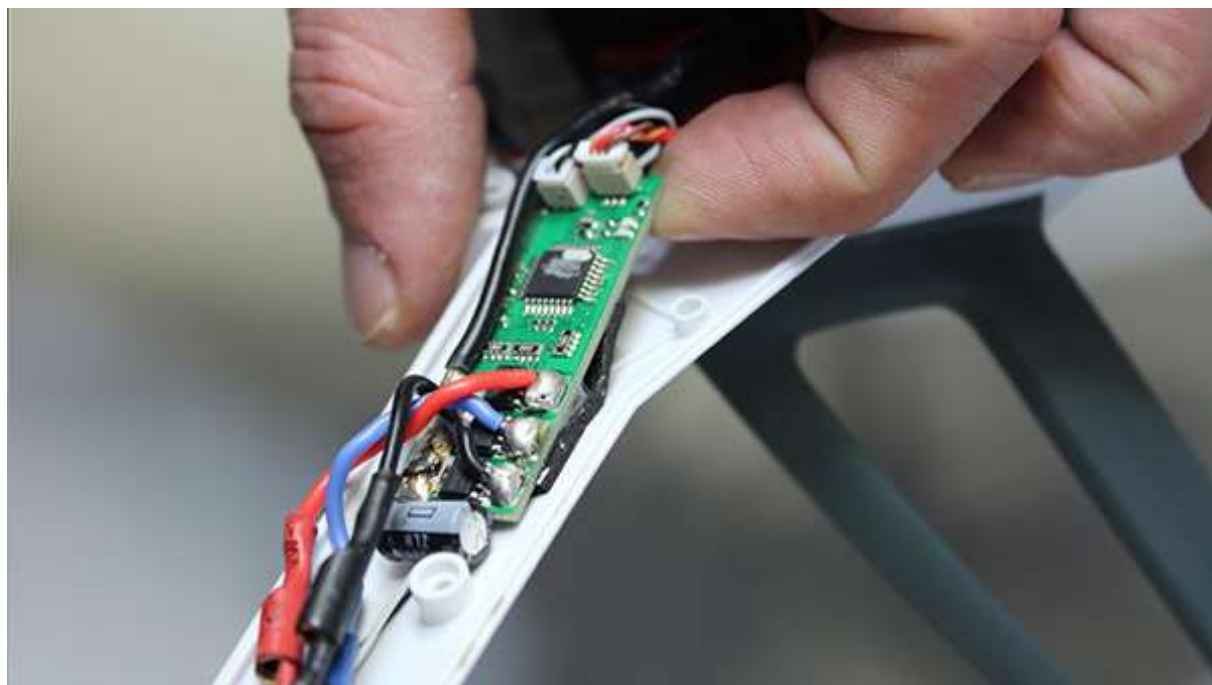
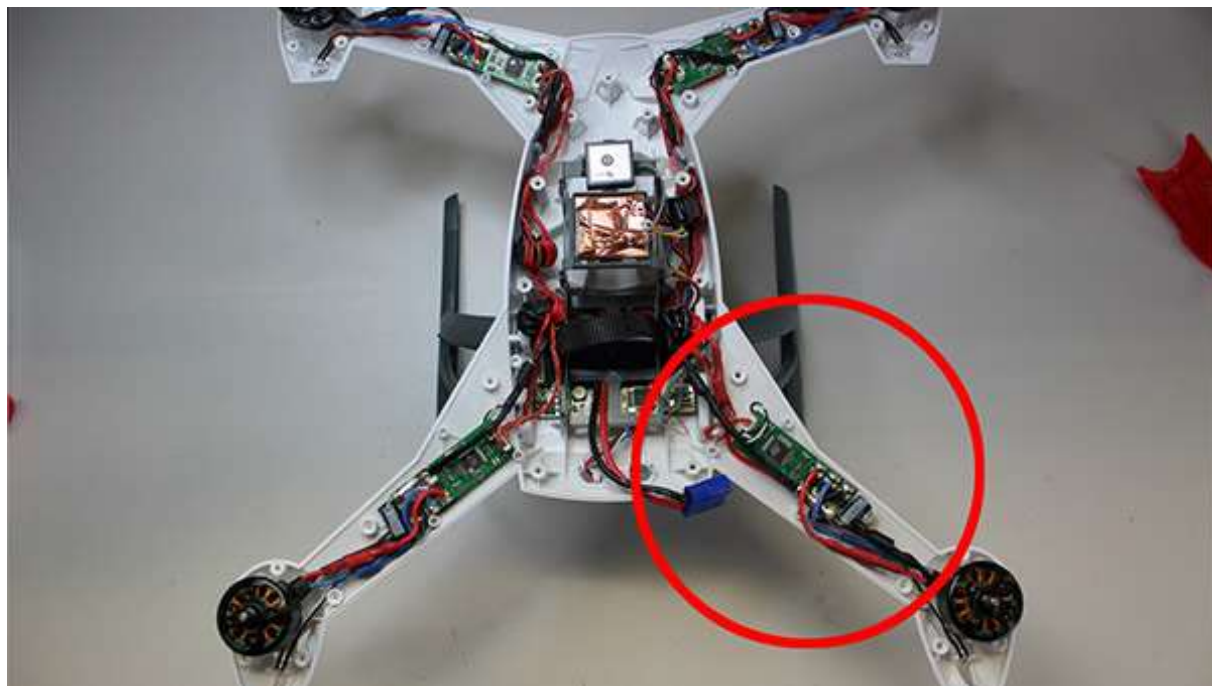
3. Turn your Blade 350 upside down and loosen the 32 body screws using a 1.5mm hex wrench.



4. Flip the 350 QX back over on its landing gear. Rotor arms # 1 and # 2 should point to front and the arms # 3 and # 4 should point to the back.  
**Tip:** In some cases the body is attached with CA glue in the middle of the arm. Separate them very carefully with a suitable tool.



5. Loosen the ESC Board from rotor arm # 3

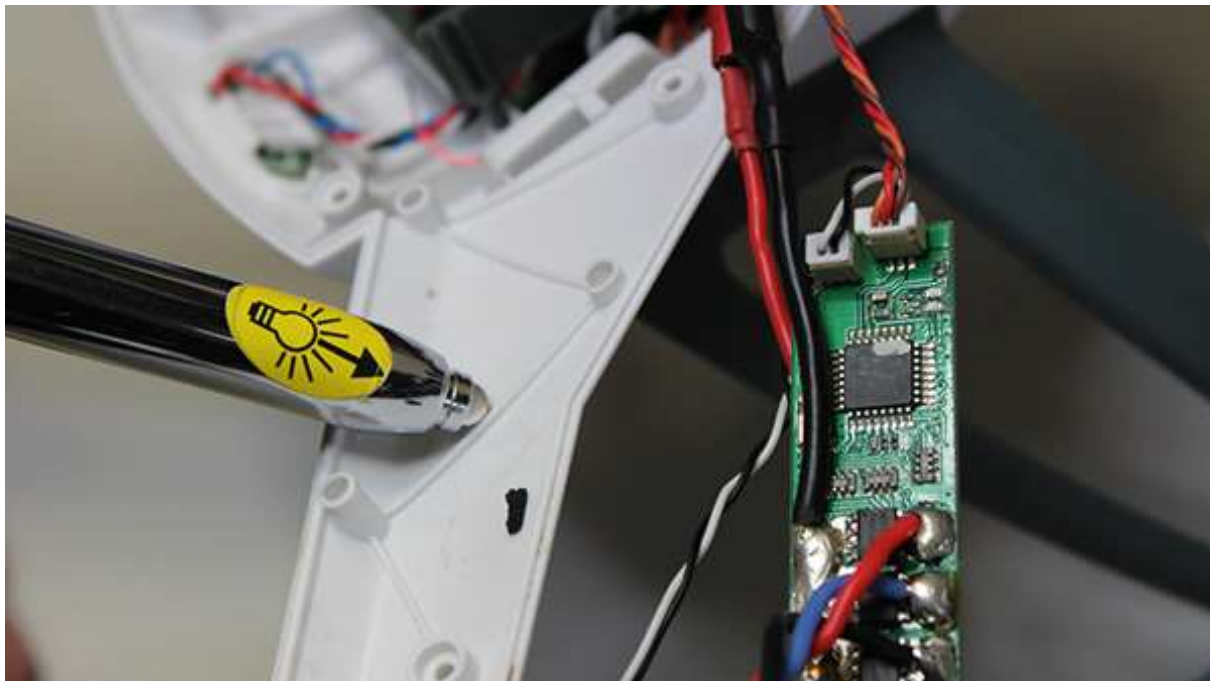


6. Remove the double sided tape from the bottom side and carefully set the electronics aside.



7. Remove the two fillets pointed out below using a hobby knife or rotary tool. Be careful to not remove too much material and we advise you wear a dust mask if you use a rotary tool.

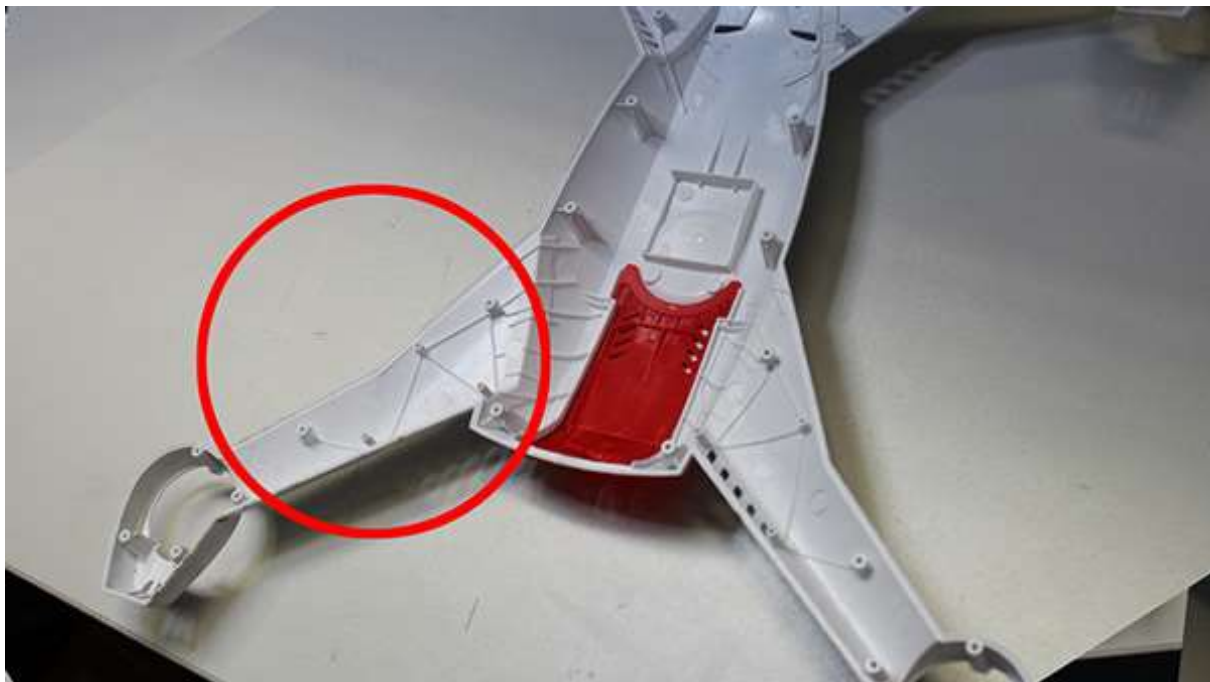
**IMPORTANT:** Please assure that the surface is completely smooth and no ridges are left as the ESC & GPS will be mounted in this location. It's essential that the GPS Unit is not being sandwiched by the body, be sure the body is not putting pressure on the unit.





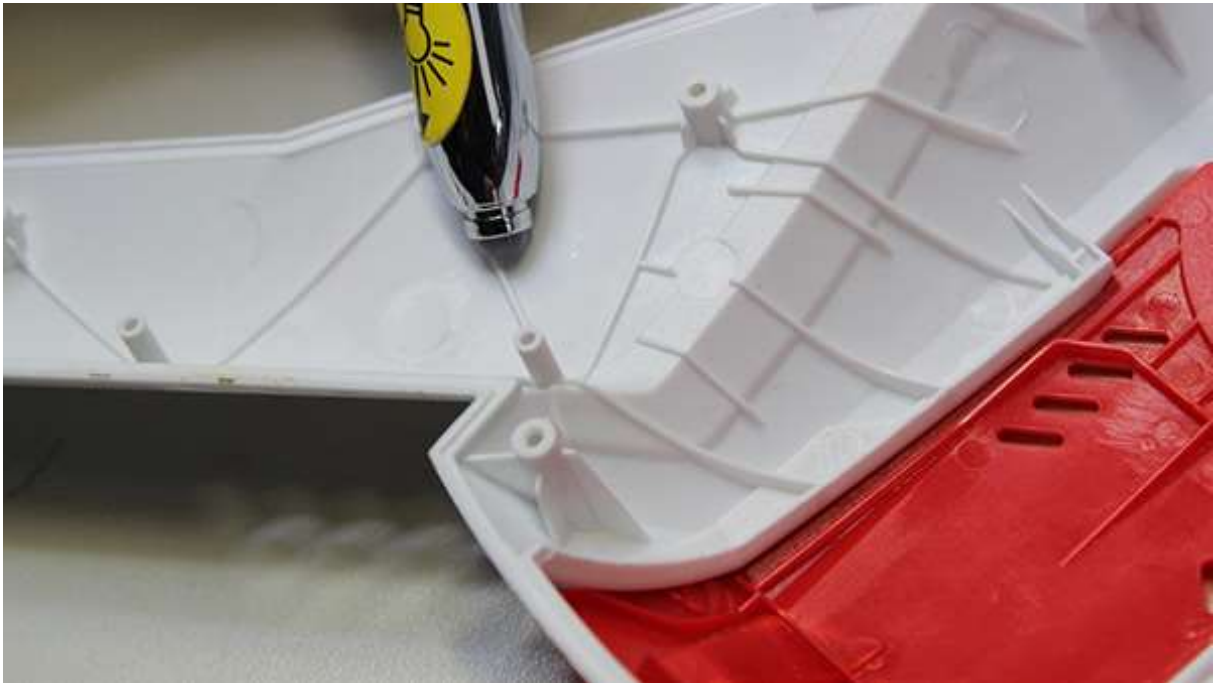


8. Place the top half of the body shell upside-down with the battery hatch facing you.



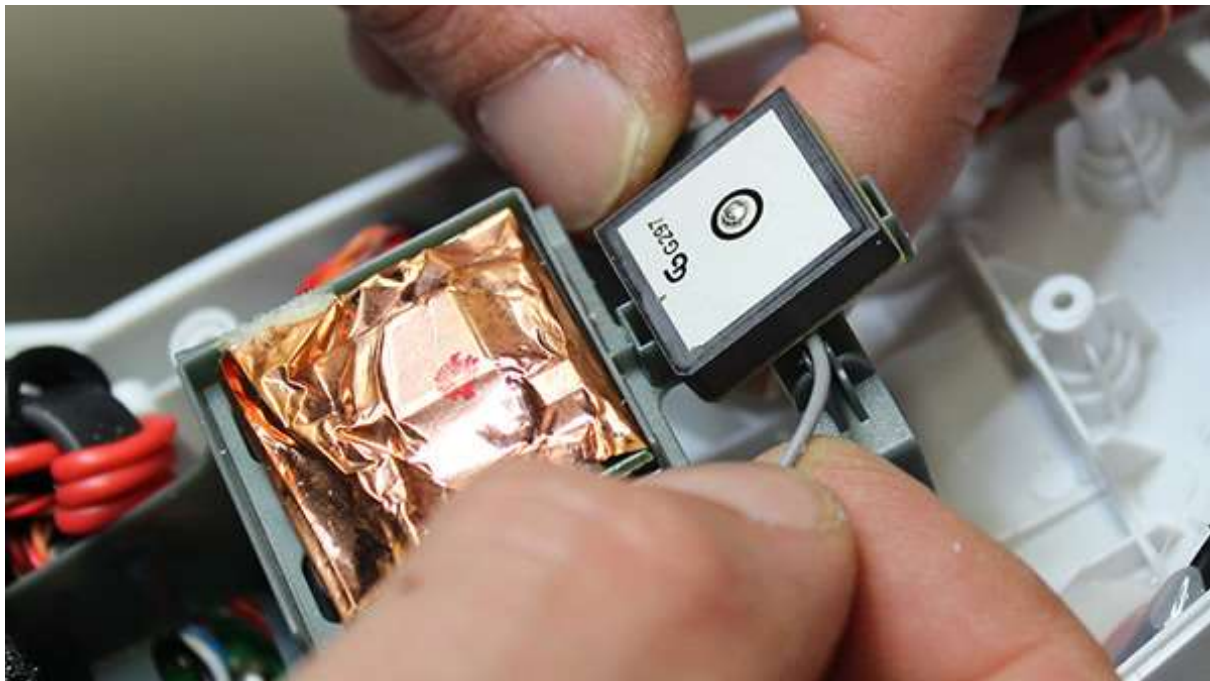
9. Remove the two fillets pointed out below using a hobby knife or rotary tool as done

above assuring the surface is smooth.

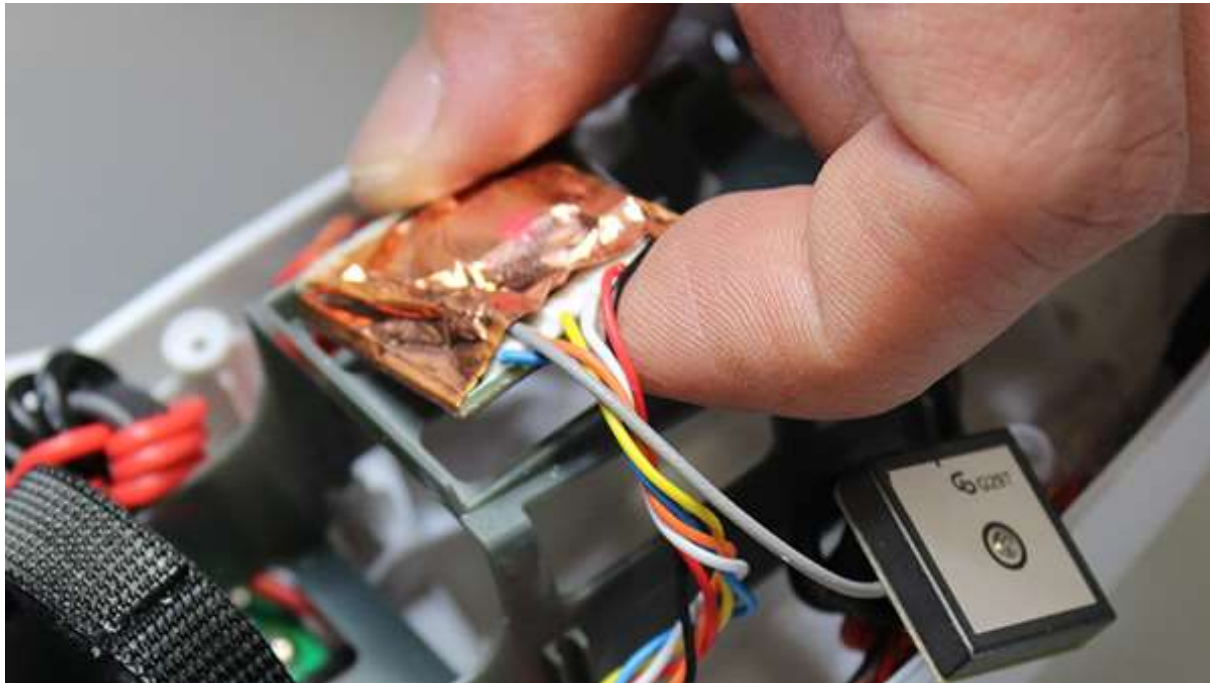




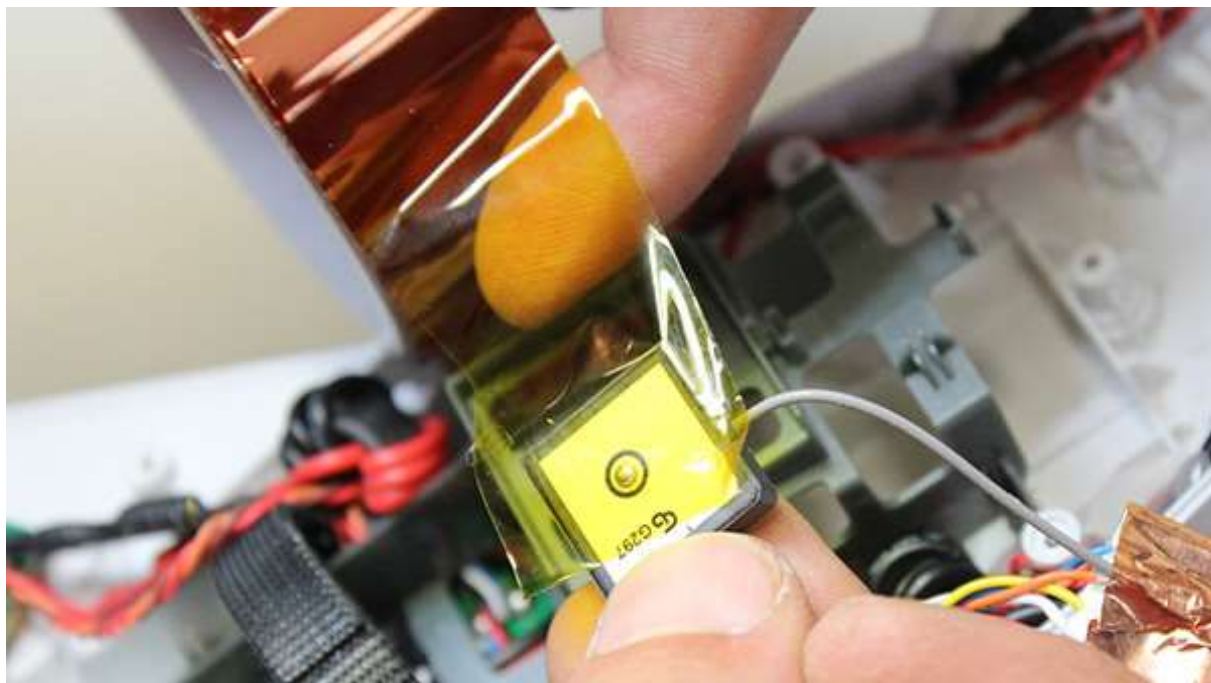
10. Carefully remove the GPS-Antenna and GPS-Receiver from the bottom half of the body.





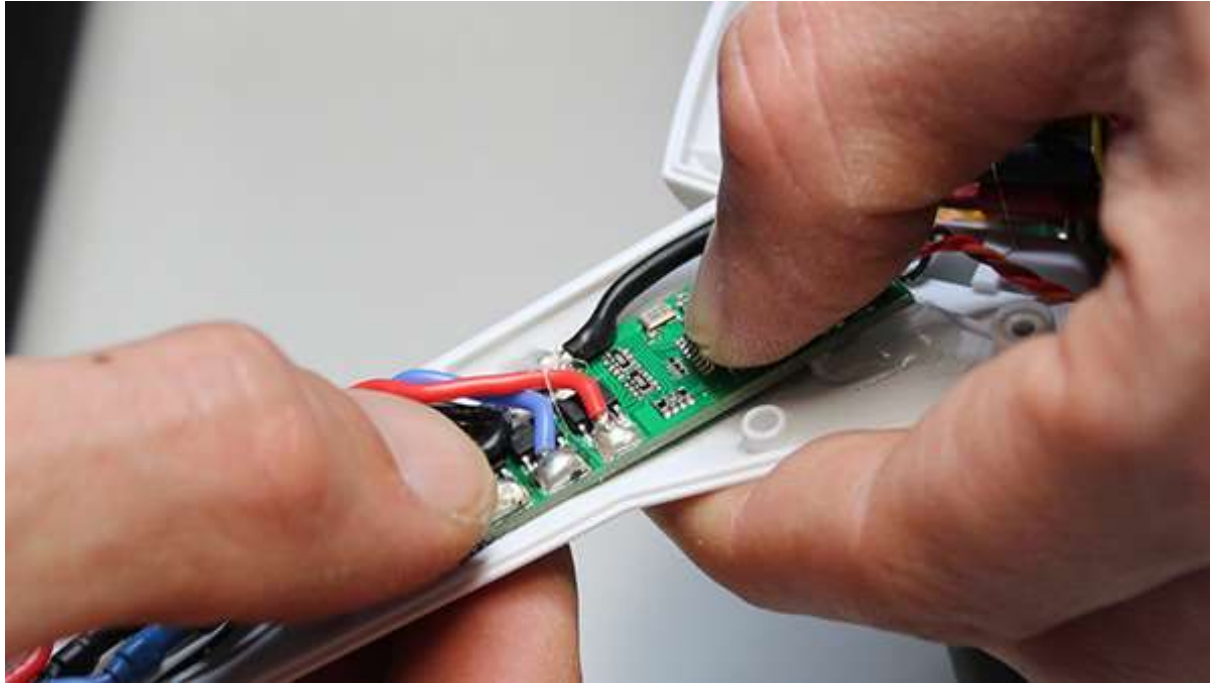


11. Wrap both components in thin insulating tape (Kapton tape recommended).

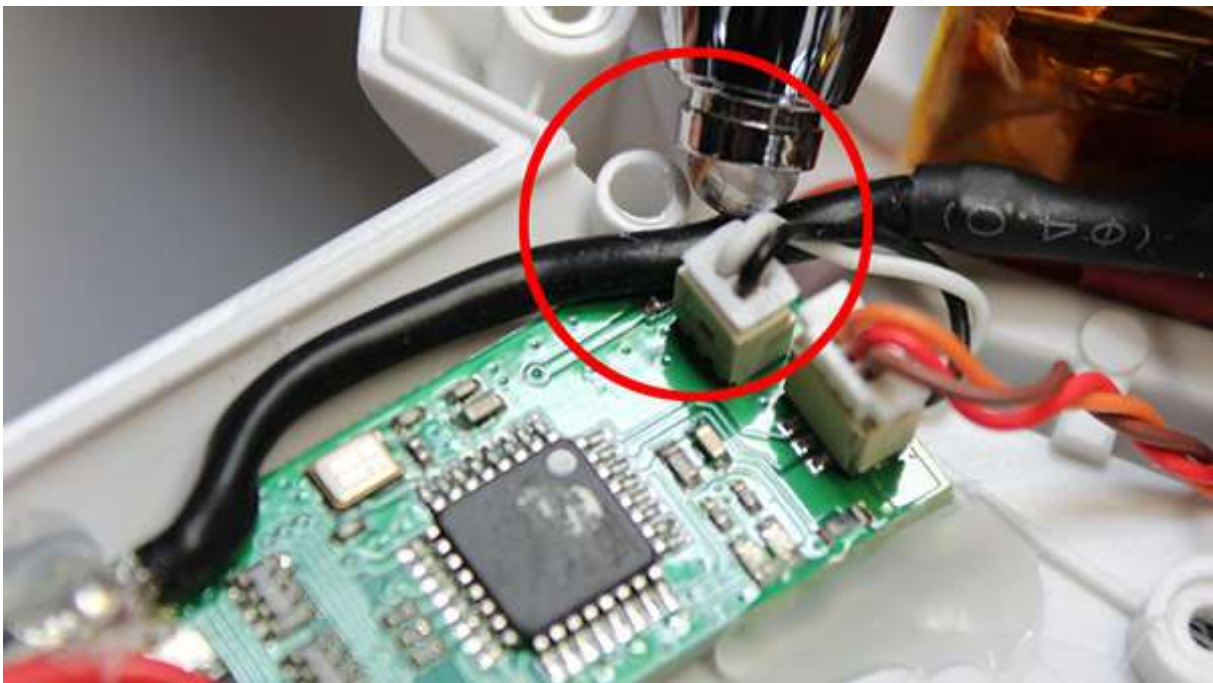


12. Attach the ESC with double sided tape (or hot glue) and press the ESC in the bottom half of the body.

**Tip:** Only use a small amount of hot glue or tape.



13. Route the black cable as shown in the two images below.

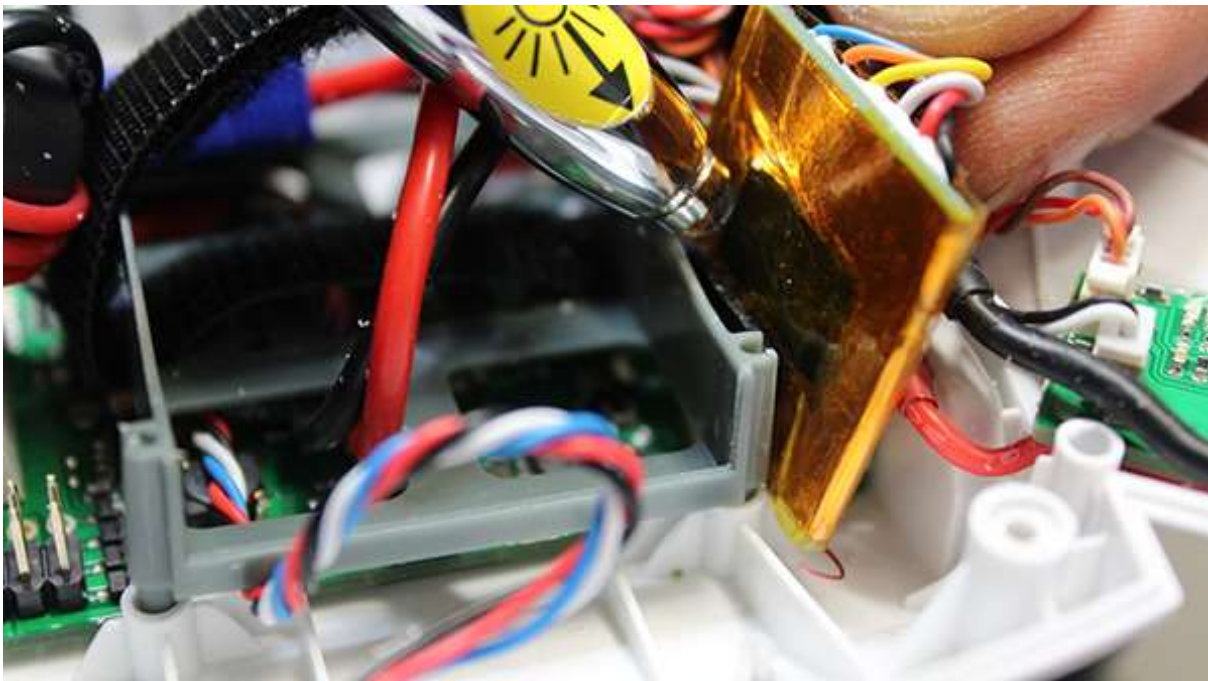




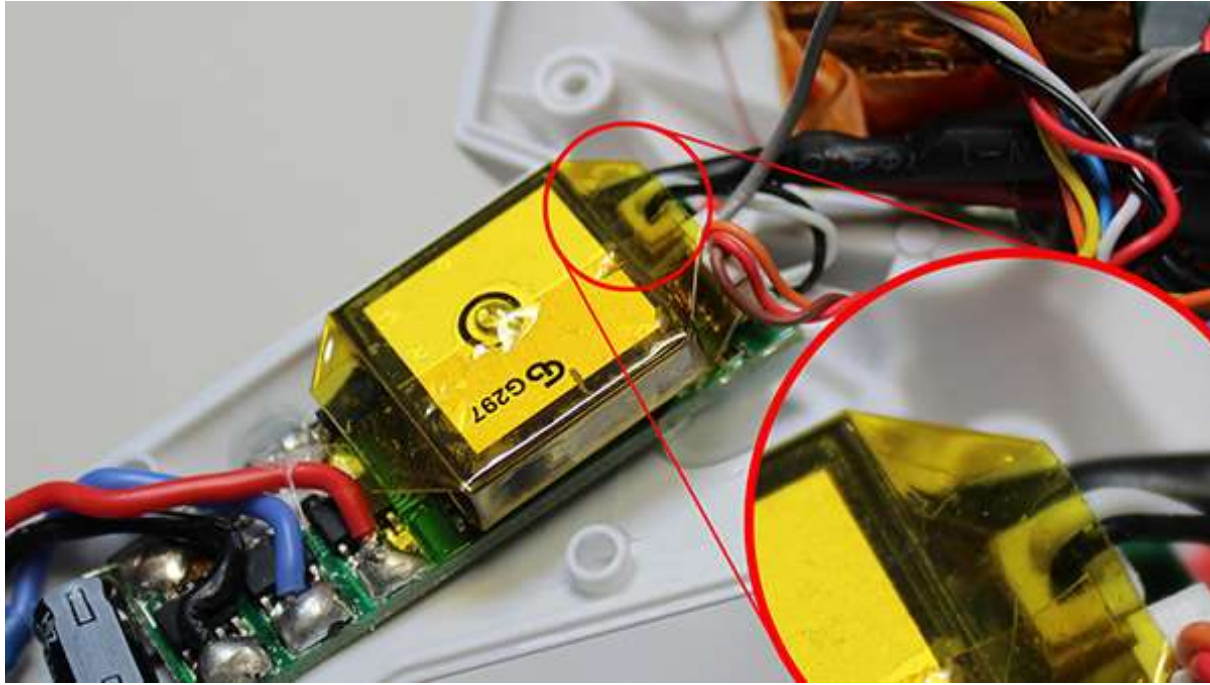
14. Image two



15. Use double sided tape to attach the GPS Receiver to the right side of the battery frame.



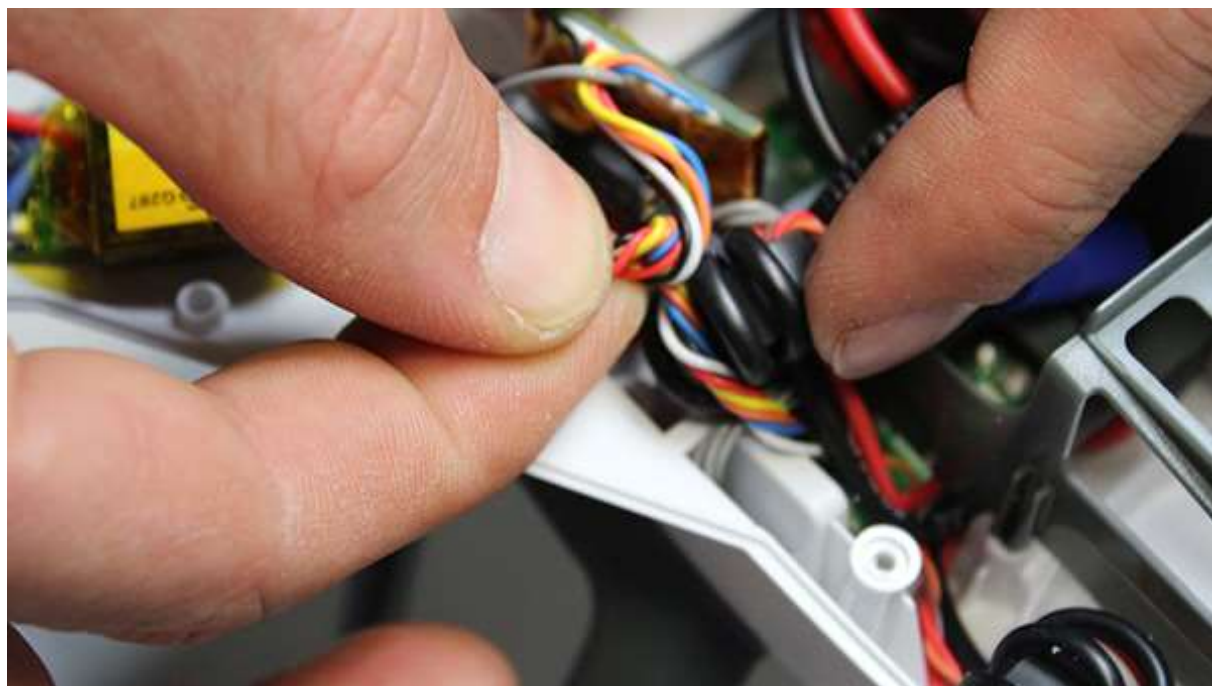
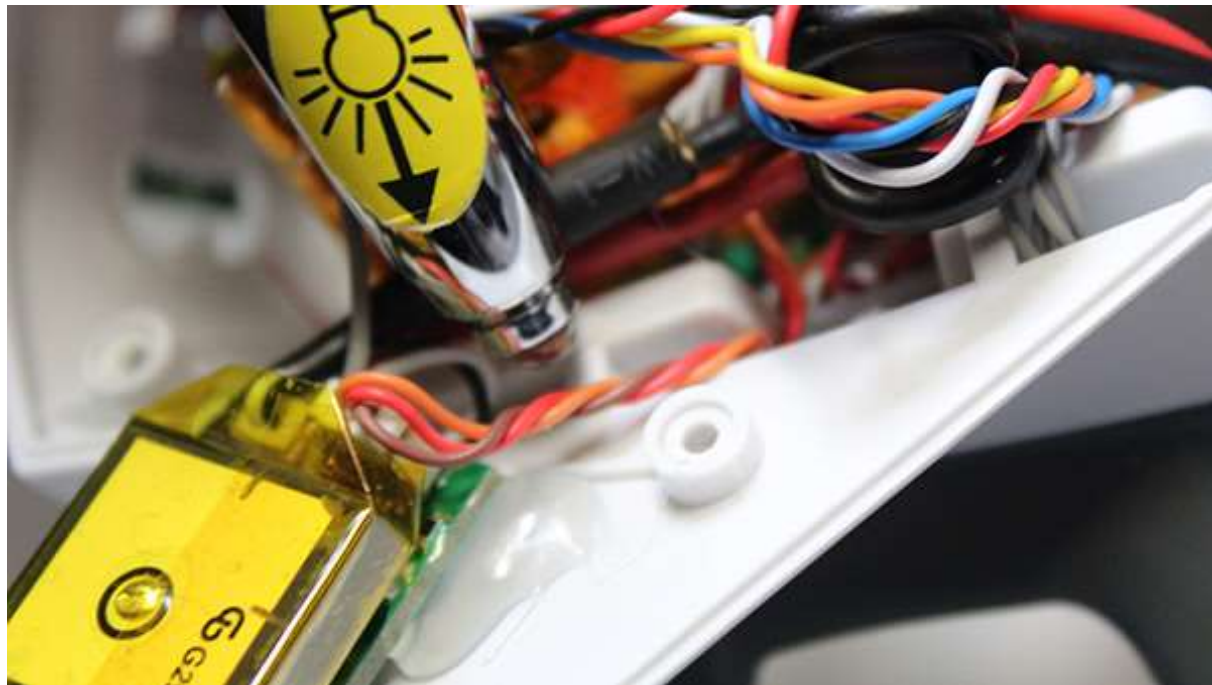
16. Route the GPS- Antenna Cable between LED- and ESC-Connector. Place the GPS antenna on the ESC.



17. Set the top side of the body back on the bottom side. Do not pinch any cables.  
**Tip:** You can twist the cable for easier handling.







18. Please check that the body fits correctly and ensure that there are no cables in between or outside of the body shell.
19. Carefully flip the 350 over and check that there are no cables visible in the screw holes.
20. Reinstall the screws attaching the two halves together.
21. Flip the 350 onto its landing gear and install the rotor blades back in their proper locations.
22. You are now ready to get your 350 back in the air. Don't forget to charge your battery, range test and as always have a blast!